



**UltraTech**  
CONCRETE  
The Engineer's Choice

**INDIA'S NO.1 RMC**

**VAC**

**VERY AMAZING CONCRETE**

**Durable aesthetic  
facades that  
drive premium**



**UltraTech**

**DURAFACAD**



**UltraTech**

**DURAFACAD**

## **Aesthetics can make or break customer trust.**

Aesthetic elements like façades, add to the premium-ness of my projects. But current façade solutions like Aluminium, Glass or Glass reinforced concrete have glaring challenges. Metal facades are prone to damage from fire. Glass facades are expensive and not sustainable causing heat envelopes and glare. Glass reinforced concrete facades are heavy, have thick cross sections, and have limited panel size which limits the quality of aesthetic output and are heavy to install.

Despite our best intentions and efforts, these current solutions can pose a risk to life and property. This leads to irreversible damage to our projects, customer trust and eventually our reputation in the market.

### **Introducing**

### **UltraTech DURAFACAD**

An amazing concrete façade solution that is fire and weather resistant, sustainable and can be made into large panel sizes of thin cross sections. Its unique Ultra High Performance Concrete mix design ensures durability of these beautiful facades. This enables you to build aesthetic premium facades without the risk of premature damage.

You can now choose from our existing designs or build your own façade. Building a distinct, aesthetic, low maintenance, and durable project is now possible with DURAFACAD.

**Why settle for the ordinary, when you can build the extraordinary!**



1800-210-3311



<https://www.ultratechcement.com/products/value-added-concrete>





**UltraTech**

**DURAFACAD**



### Advantages:

- Lighter and thinner cross sections with large panels
- Customizable design, or you can choose from our existing designs
- Resistant to fire, weathering elements making it durable
- End to end facade solution provided with the assurance of UltraTech
- Reduced dead load on structure due to thinner section
- Easy to handle & install



### Technical Specifications:

Ultra-High Performance Concrete (UHPC) with

- Compressive Strength over 120 MPa
- Flexural Strength over 18 MPa
- Thickness of Panel: Typically 30mm



### Application Areas:

- Primary facades - internal and external
- Second skin on buildings
- Architectural elements like sun breakers, pergolas, Logo etc.



1800-210-3311



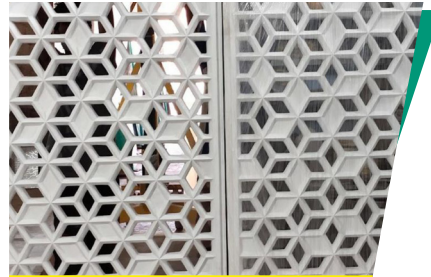
<https://www.ultratechcement.com/products/value-added-concrete>



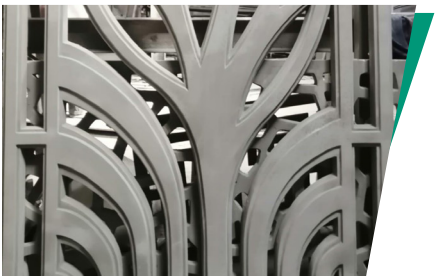
## Standard Patterns available



**VERTICAL FINS**



**DIAMOND CUT**



**FLORAL**



**STARLIGHT**



**CASKET**



**SUN BREAKERS**



1800-210-3311



<https://www.ultratechcement.com/products/value-added-concrete>

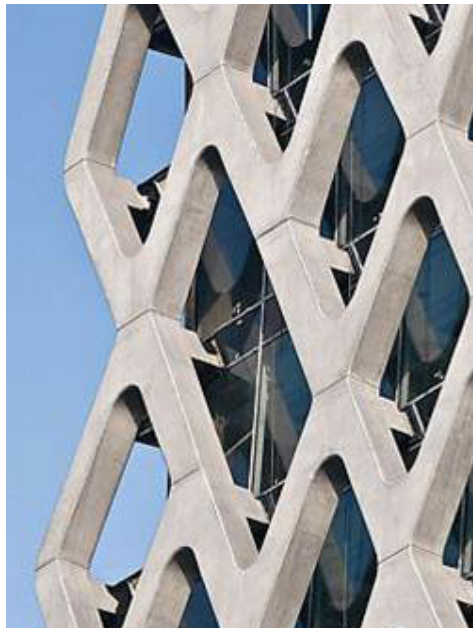
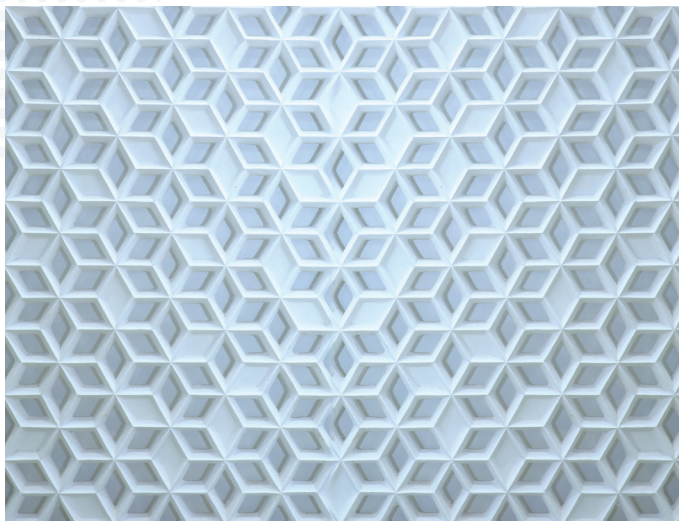




**UltraTech**

**DURAFACAD**

## Artistic and durable Façade solutions.



1800-210-3311



<https://www.ultratechcement.com/products/value-added-concrete>



FREEFLOW PLUS  
AQUASEAL  
THERMOCON PLUS  
FIRESAFE  
DECOR  
PERVIOUS  
iFLOORS  
LITECON  
ZIP  
RAPID  
DURAPLUS  
**DURAFACAD**  
CORROPROTECT  
MAXSHEEN



1800-210-3311



<https://www.ultratechcement.com/products/value-added-concrete>



[facebook.com/ultratechcementlimited](https://facebook.com/ultratechcementlimited)



[twitter.com/ultratechcement](https://twitter.com/ultratechcement)



**UltraTech**  
**CONCRETE**

*The Engineer's Choice*

**INDIA'S NO.1 RMC**

